

# Refractory Anchors



## Sample Catalogue

---

Delivering a vast range for over 20 years, Antec offer an extensive range of high quality standard and custom-made refractory anchor products for a variety of linings and lining depths.

With a unique range of clever anchoring systems, in-house manufacturing facilities and responsive service, we can help you increase performance, speed up installations and save money.

Features of Antec's range of refractory anchors includes:

- Comprehensive range of common anchor shapes and sizes in stock
- Full in-house design and manufacturing for fast turnarounds on custom anchor designs
- Range of stainless steel and nickel alloys in stock including alloy 304, 310, 253MA, DS, 601
- Specialised high temperature heat-resistant alloys available

Antec's range of anchors includes:

- \* Y & V Anchors
- \* Welded and Twisted Anchors
- \* Split Tyne, Stud Welded and Rotalock Anchors
- \* Christmas Tree and Strap Anchors
- \* Ceramic Anchor Brick Clips
- \* Shelf & PV Anchors
- \* Shelf Brackets & Fabricated Parts
- \* Ceramic Fibre Fixings

The following pages provide a sample of the range of anchors supplied by Antec. For custom products please contact us.



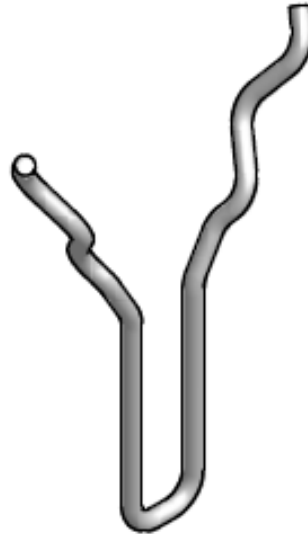
Solutions for the Mining, Minerals Processing  
& Infrastructure Industries

Distributed by: **ANTEC ENGINEERING PTY LTD**  
9 Chicago Avenue, Blacktown, NSW, 2148, Australia  
Ph : +61 (02) 9622-9622 | Fax: +61 (02) 9622-9199  
[www.antec.com.au](http://www.antec.com.au)

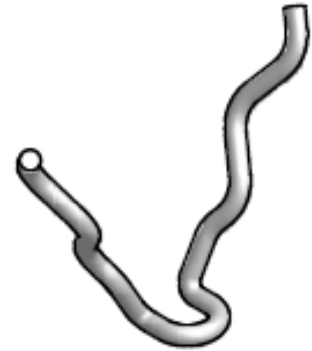
# Refractory Anchors



**AN 02**  
VP



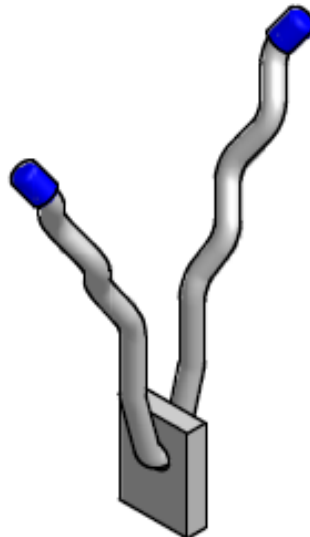
**AN 06**  
YCP



**AN 03**  
VCL



**AN 43**  
SNAPTIE (THREADED)



**AN 29 A**  
MARK 1 ROTALOCK



**AN 11**  
WB



Solutions for the Mining, Minerals Processing  
& Infrastructure Industries

Distributed by: **ANTEC ENGINEERING PTY LTD**  
9 Chicago Avenue, Blacktown, NSW, 2148, Australia  
Ph : +61 (02) 9622-9622 | Fax: +61 (02) 9622-9199  
[www.antec.com.au](http://www.antec.com.au)

# Refractory Anchors



**AN 16**  
YDX



**AN 22**  
TRIANGULAR BASE  
ANCHOR (HORIZONTAL)



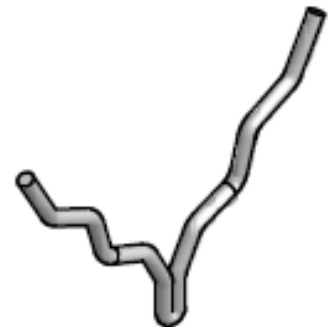
**AN 18**  
YXC



**AN 32**  
HP ANCHOR



**AN 28**  
SHP ANCHOR



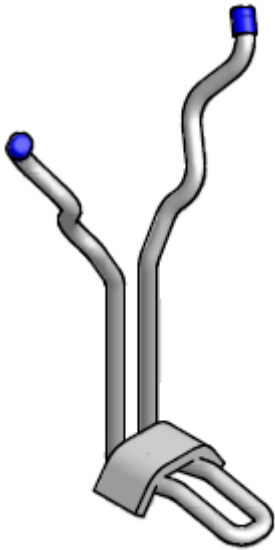
**AN 26**  
SVC ANCHOR



Solutions for the Mining, Minerals Processing  
& Infrastructure Industries

Distributed by: ANTEC ENGINEERING PTY LTD  
9 Chicago Avenue, Blacktown, NSW, 2148, Australia  
Ph : +61 (02) 9622-9622 | Fax: +61 (02) 9622-9199  
[www.antec.com.au](http://www.antec.com.au)

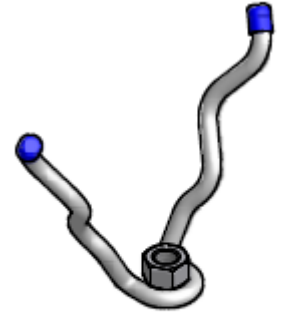
# Refractory Anchors



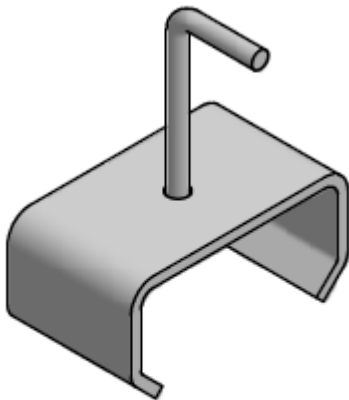
**YCL**  
with locking cleat



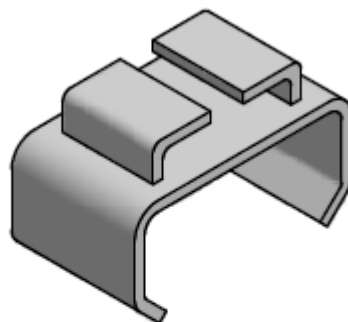
**VCL**  
with locking cleat



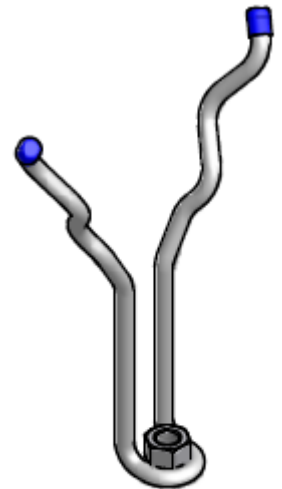
**AN 14 B**  
VCL-N



**AN 37**  
ROD MOUNTED "C" CLIP



**AN 39**  
"I" BEAM MOUNTED "C" CLIP



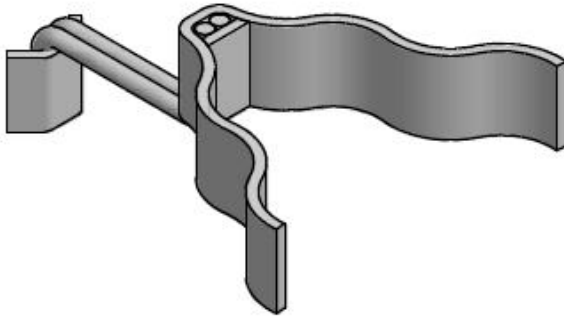
**AN 14 C**  
YCL-N



Solutions for the Mining, Minerals Processing  
& Infrastructure Industries

Distributed by: **ANTEC ENGINEERING PTY LTD**  
9 Chicago Avenue, Blacktown, NSW, 2148, Australia  
Ph : +61 (02) 9622-9622 | Fax: +61 (02) 9622-9199  
[www.antec.com.au](http://www.antec.com.au)

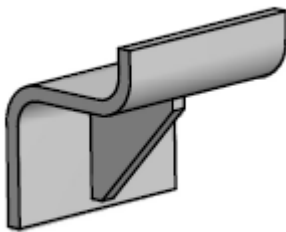
# Refractory Anchors



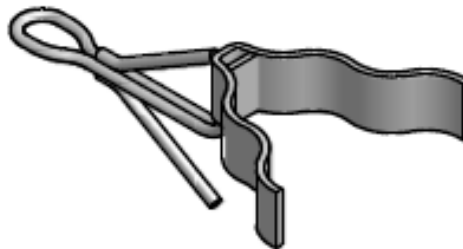
**AN 35**  
PV ANCHOR WITH "Z" BAR



**SPEEDCLIP**



**SB 2**  
SINGLE



**AN 35**  
PV ANCHOR



**CFF PIN**



Solutions for the Mining, Minerals Processing  
& Infrastructure Industries

Distributed by: **ANTEC ENGINEERING PTY LTD**  
9 Chicago Avenue, Blacktown, NSW, 2148, Australia  
Ph : +61 (02) 9622-9622 | Fax: +61 (02) 9622-9199  
[www.antec.com.au](http://www.antec.com.au)